

Hormozgan Ports and Maritime Administration	Integrated Management System
	Document Name: Berth Characteristics
	Document Code: OH – W55 – 00

Berth Characteristics

Department of Maritime Affairs

Hormozgan Ports and Maritime Administration

Information provided here about berth characteristics and potential of vessel reception may change after re-hydrographic of the region and basins, or based on committee opinions about Near – Miss and maritime accidents or according to authorities' views.

Number 1 – 89 (Maximum draft for vessel reception is changed in some of Shahid Rajae berths.)

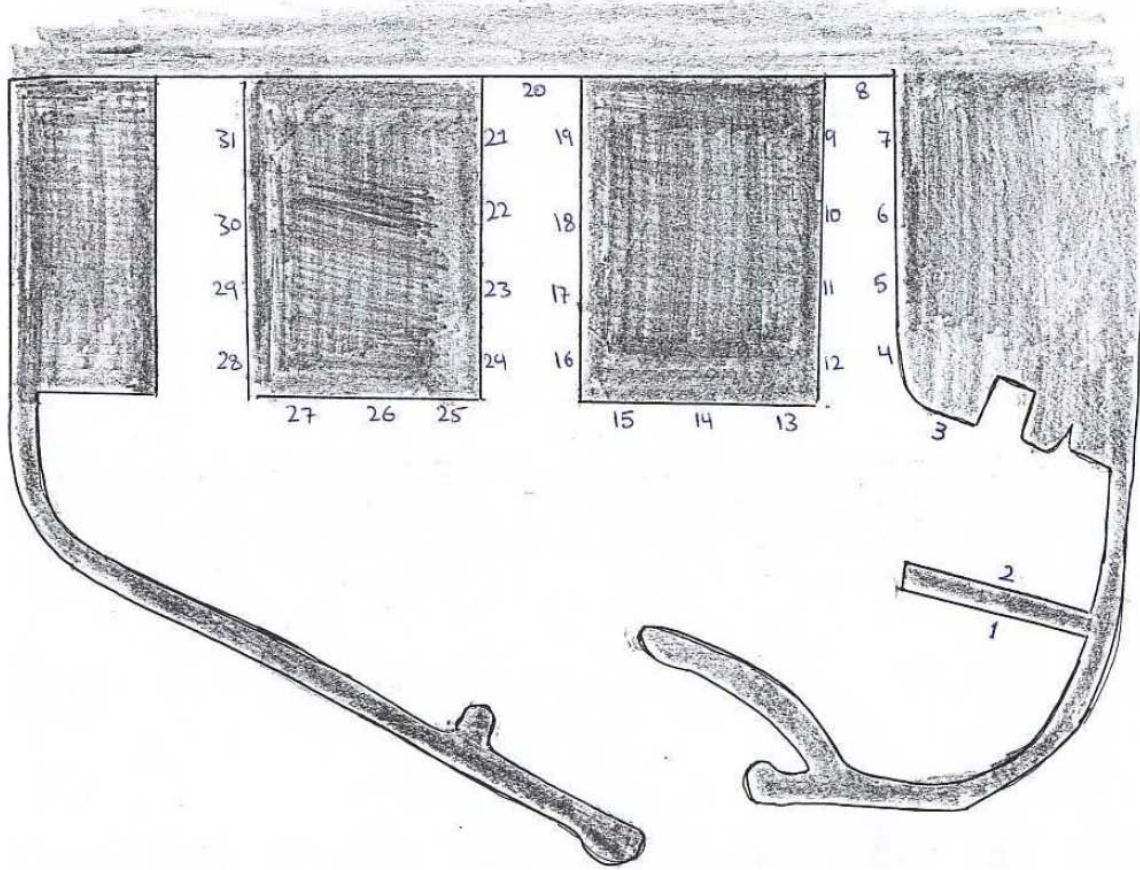
Hormozgan Ports and Maritime Administration	Integrated Management System
	Document Name: Berth Characteristics
	Document Code: OH – W55 – 00

Table of Contents

- A) Berths of Shahid Rajaei Port**
- B) Berths of Foolad Hormozgan Complex**
- C) Persian Gulf Berths**
- D) Kaveh Berths**

A) Berths of Shahid Rajae Port

Berths' Number



**Allowed Size of Vessels (Length and Draft) for Berthing and Unberthing in
the Berths of Shahid Rajaei Port**

Row	Berth Number	Maximum Allowed Length of Vessels (m)	Maximum Allowed Draft of Vessels (m)	Notes
1	Berth Number 1 (Oil)	228	11.35	
2	Berth Number 2 (Oil)	228	11.35	
3	Berth Number 3 (Multi – Purposes)	190	11	Refer to Article 3 of the following explanations
4	Berth Number 4 (Container)	340	11.85	
5	Berth Number 5 (Container)	300	12.35	
6	Berth Number 6 (Container)	270	12	
7	Berth Number 7 (Container)	250	11.3	
8	Berth Number 8 (Container)	100	4.8	
9	Berth Number 9 (Break-Bulk)	200	9.85	Ro – Ro < 100 M
10	Berth Number 10 (Break-Bulk)	220	9.85	Ro – Ro < 120 M
11	Berth Number 11 (Break-Bulk)	250	9.85	Ro – Ro < 150 M

12	Berth Number 12 (Break-Bulk)	300	10.35	Ro – Ro < 200 M
13	Berth Number 13 (Multi – Purposes)	300	11.5	Refer to Article 4 of the following explanations
14	Berth Number 14 (Break	300	11.5	
15	Berth Number 15 (Break	300	11	
16	Berth Number 16 (Break	300	10	Ro – Ro < 200 M
17	Berth Number 17 (Break	250	10	Ro – Ro < 150 M
18	Berth Number 18 (Break	220	10	Ro – Ro < 130 M
19	Berth Number 19 (Multi – Purposes)	200	10	Ro – Ro < 100 M Refer to Article 3 of the following explanations
20	Berth Number 20 (Multi – Purposes)	160 to 175	10	160 meters if vessels berthing in berth number 19 175 meters if no vessels berthing in berth number 19 Ro – Ro < 130 M Refer to Article 3

				of the following explanations
21	Berth Number 21	----	----	
22	Berth Number 22	----	----	
23	Berth Number 23	----	----	
24	Berth Number 24	----	----	
25	Berth Number 25 (Container)	370	14.5	
26	Berth Number 26 (Container)	370	14.5	
27	Berth Number 27 (Container)	370	14.5	

Explanations:

1. Berths in priority for berthing of Ro – Ro vessels are respectively berths number 13, 14, 15, 12, and 16.
2. Berths number 6, 7, and 19 are allocated to berthing vessels from starboard and berth number 9 is used for berthing vessels from larboard; it should be noted that using these berths requires the permission of Department of Maritime Affairs.
3. Given unloading rate and amount of tidal water and the permission of Department of Maritime Affairs, oil vessels whose drafts are deeper than allowed level can berth in berths number 3, 19, and 20.
4. Bulk vessels with draft deeper than allowed level noted in characteristics of berths number 13, 14, and 15, having information like TPC and loading/unloading rate should get the permission of Departments of Maritime Affairs and Port Affairs to berths.

Berths of Foolad Hormozgan Complex

Allowed Size of Vessels (Length and Draft) for Berthing and Unberthing in Foolad Berths

Row	Berth Characteristics	Maximum Allowed Length of Vessels (m)	Maximum Allowed Draft of Vessels (m)	Notes
1	Oil	260	13.5	Vessels can berth after tidal currents (ebb) finished
2	Non - Oil	260	13.5	Vessels can berth after tidal currents (ebb) finished

**Maximum Allowed Draft of Outgoing Non-Oil Vessels Berth to Foolad
Berths from Portside**

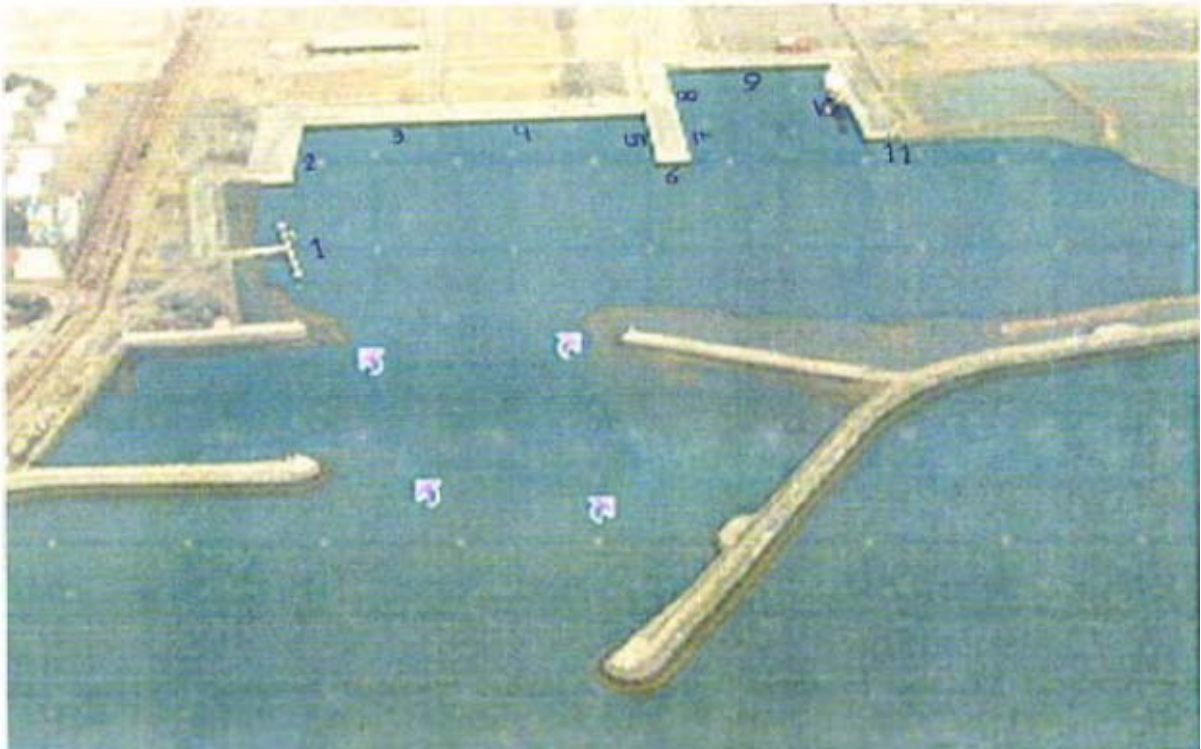
Height of Tide (m)	Maximum Draft (m)	Maximum Speed
2.4	13.4	5 Knot
2.5	13.5	5 Knot
2.6	13.6	5 Knot
2.7	13.65	5 Knot
2.8	13.7	5 Knot
2.9	13.8	5 Knot
3	13.9	5 Knot
3.1	13.95	5 Knot
3.2	14	5 Knot
3.3	14	5 Knot
3.4	14	5 Knot
3.5	14	5 Knot
3.6	14	5 Knot
3.7	14	5 Knot
3.8	14	5 Knot
3.9	14	5 Knot
4	14	5 Knot
4.1	14	5 Knot
4.2	14	5 Knot

Explanations:

1. Vessel should berth from portside.
2. Vessel should have no list.
3. If in shallow water with the speed of lower than 5 knot, vessel squat is more than 20 cm (0.2 m), the additional amount should be deducted from maximum draft mentioned in the table.
4. Due to the important role of human errors in maritime accidents, exact calculations are done by shipmaster; therefore, shipmaster and shipping company are completely responsible for these calculations and vessel safety.
5. Deficiencies and failures result in accidents or Near-Miss could be addressed in terms of law.

Persian Gulf Berths

Berths' Number:



**Allowed Size of Vessels (Length and Draft) for Berthing and Unberthing in
Persian Gulf Berths**

Row	Berth Number	Maximum Allowed Length of Vessels (m)	Maximum Allowed Draft of Vessels (m)	Notes
1	Berth Number 1	115	7.5	Pilotage of vessels with the draft of more than 7 meters takes place in tidal currents (ebb)
2	Berth Number 2	100	7	Pilotage of vessels with the draft of more than 7 meters takes place in tidal currents (ebb)
3	Berth Number 3	80	7.5	Pilotage of vessels with the draft of more than 7 meters takes place in tidal currents (ebb)
4	Berth Number 4	125	7.5	Maximum barge: 70 meters
5	Berth Number 5	105	7.5	Pilotage of vessels with the draft of more than 7 meters takes place in tidal currents (ebb)
6	Berth Number 6	----	----	Pilotage of vessels with the draft of

				more than 7 meters takes place in tidal currents (ebb)
7	Berth Number 7	125	7.5	Pilotage of vessels with the draft of more than 7 meters takes place in tidal currents (ebb)
8	Berth Number 8	125	7.5	Pilotage of vessels with the draft of more than 7 meters takes place in tidal currents (ebb)
9	Berth Number 9	100	7.3	Pilotage of vessels with the draft of more than 7 meters takes place in tidal currents (ebb)
10	Berth Number 10	125	7.5	Pilotage of vessels with the draft of more than 7 meters takes place in tidal currents (ebb)

Explanations:

1. Pilotage of vessels with the draft of more than 7 meters takes place in tidal currents (ebb).
2. In berth number 10, berthing vessels from starboard needs the permission of Department of Maritime Affairs.
3. In berth number 1, berthing vessels from larboard needs the permission of Department of Maritime Affairs.
4. Berthing vessels in berth number 10 is possible only if just one tow, barge, or vessel moored in berths number 7 and 8.

Kaveh Berths

Allowed Size of Vessels (Length and Draft) for Berthing and Unberthing in Kaveh Berths

Row	Berth Characteristics	Maximum Allowed Length of Vessels (m)	Maximum Allowed Draft of Vessels (m)	Notes
1	External Berth	10	140	Up to 100 in slack water
2	Internal Berth	14	240	Up to 120 in slack water

Explanations:

1. In Kaveh internal berths, vessel must berth from larboard.
2. Direction and intensity of water flow has a great impact on vessels' maneuvers in the vicinity of the Kaveh berths; therefore, pilot and shipmaster agreement about the right time to maneuver is also of a great importance.
3. Need to pilot must be declared to VTC at least 3 hours before.